



## EQUA VENICE 200+

AQUA SU ARITIMI SAN. TIC. VE MUH. A.Ş.  
Ferhatpasa Mah. Ferhatpasa Yolu sok. No:19/1  
Atasehir-ISTANBUL

Tel : 0216 661 60 60 - Faks: 0216 661 68 50 [www.aqua.com.tr](http://www.aqua.com.tr) – info@aqua.com.tr

## **EQUA VENICE 200+ USER MANUAL**

VALUED CUSTOMER,

**Thanks** to the **EQUA Venice 200+** Water Purifier you have purchased;

All impurities (chemical-microbiological) that may be in our waters are purified and water in first class spring water quality is produced.

The **EQUA Venice 200+** Water Purifier in your kitchen is not only for drinking water but also for cooking food.

It also offers healthier and more pleasant water for you.

**With the EQUA Venice 200+** Water Purifier, we offer you the opportunity to experience the real taste of your food and beverages. you will catch.

Medical circles believe that water, which is one of the indispensable elements for human life, ensures a healthy life.

While emphasizing the importance of maintaining the water, "free from chemical and microbiological pollution"

They insist that it should be consumed.

Reverse Osmosis System:

Water production by means of a physical system (without the use of chemical elements) is the best available method.

Its working principle is the same as the human body; water diffuses by natural osmosis, foreign elements in the water purified and the most ideal drinking water is produced.

Purifying water with the reverse osmosis system (reverse osmosis) method, scientists are in the purification of water.

It is one of the last points he has reached.

Factors that threaten our health that may exist in water with the reverse osmosis system treatment method,

By purifying it, you can consume it with your loved ones, with the ideal drinking water quality and taste, with peace of mind.

" Thank you for choosing the **EQUA Venice 200+** water purifier"

**Treated impurities:**

- Suspended particles (dust, sand, moss, mud, etc.)
- Chlorines
- Chrome
- Arsenic
- Cyst
- Bullet
- Bicarbonates
- Nitrates
- Sulphate
- Radium

**INGREDIENTS:**

**EQUA Venice 200+** water purifiers are **installed in** accordance with the technical specifications described in this booklet.

As long as it is used before and in accordance with the assembly instructions, it can be used economically and efficiently for many years. will serve.

This device is only suitable for the design purpose and specifications stated in the brochure and user manual.

should be used as

In maintenance and repairs, the device should not be interfered with by the authorized service.

The original parts supplied must be used.

**WARRANTY AND SERVICE TERMS**

Provided that the standards and the warnings specified in this user manual are complied with, water treatment devices

It is guaranteed against material defects for 2 (two) years from the date of purchase.

These devices are serviced at the Service Center. Delivery of the product to the service point

are the responsibility of the customer, and the shipping costs and risks that may arise belong to the customer.

Bringing the device to the guarantor or its authorized services in accordance with the guarantor's shipping instructions or defective or damaged, subject to the following conditions, at the option of the warranty parts are repaired or replaced with new ones.

In order for our product to be repaired under warranty, in the product warranty terms section.

must be in accordance with the requirements and must be delivered to the authorized service and service point.

Anything other than what the guarantor warrants cannot be covered by this two-year warranty.

## **WARRANTY TERMS AND EXCLUSIONS**

- In case of non-compliance with the instructions in the pre-installation, installation and maintenance sections of this booklet. possible damage or failure of the device to operate at full efficiency.
- In the assembly, repair of the device by the guarantor or by unauthorized persons not appointed by him. work or modification, misuse or accident.
- Installation, use and maintenance works that do not comply with the regulations and assembly instructions.

**Attention! filter cartridges are consumables. Usage periods are given in the maintenance section. Filter**

**cartridges must be replaced after this period. This change is not covered by the warranty.**

## **WORKING PRINCIPLE;**

Reverse Osmosis device, with its high technology, is used in drinking water production in many countries today.

is successfully implemented. The water entering the system from the system inlet valve is first filtered through the pre-sediment filter.

It is cleaned from rust, sand, clay and other floating materials by passing it through and pressurizes the device to operate.

The water, which is pressurized by the pump that will provide

Removal of organic substances, chlorine, bad taste, odor, color and heavy metals is provided.

In the third stage, organic substances and carbon particles that can escape from the granular activated carbon are removed.

used for retention. The fourth stage is the heart of the device and the main purification process.

is the membrane. Reverse Osmosis (RO) membrane has semi-permeable properties. on the membrane

The diameter of the permeable pores is larger than the molecular diameter of pure water and all other smaller than the molecular diameters of the melts. Thus, high pressure water is applied to the membrane surface.

When given, only pure water molecules and only 1-8% of all other solutions penetrate the membrane surface.

can penetrate. Thus, the solutes in water have a minimum rate of 92% depending on their molecular diameters.

suspended solid particles, bacteria and microorganisms are completely filtered. Here

The process is completely physical and there is no addition of any chemical substance.

Membrane can purify ≈50% of inlet water. The other 50% is the accumulation that will form on it (solution melt).

and organic materials) from its surface. from the fifth stage RO membrane.

In order to make the deionized water suitable for the palate, it is passed through an active carbon filter.

accumulated in the warehouse. You can get healthy water from the device's own tap. The device is fully automatic.

The tank fullness is controlled by the tank pressure sensor, and the device turns off when the tank is full. Purification

When you open the tap of the device and take some water, the device starts to work automatically and water the decreasing water.

will complete.

### **Pressure increasing pump (Booster pump)\***

Our silently running pump is manufactured using high-end technology. Highest from your system

It is designed to provide pressure in the range of 80-100 psi so that you can get efficiency. Mains pressure

Applies to less than 3 bars.

• **Available in Plus models only.**

### **TECHNICAL SPECIFICATIONS**

RO water output capacity

: 75 GPD or 100 GPD

pressure tank

: 2.2 Gallon steel

inlet water pressure

: 3-6 bars

inlet water temperature

: minimum 5°C ~ maximum 40°C

TDS (total amount of dissolved solids): 0-500 mg \ lt

Treatment rate

: 92% ~ 99%

Device size

: **Width 27 cm, Depth 45 cm, Height 38 cm**

Device weight without pump

: 8 kg (empty)

Device weight with pump

: 10.3 kg (empty)

#### **Filtration Stages of RO Device :**

1. Y1062- EQUA VENICE 200 RED IN-LINE 12" GAC: Prevents organic substances from chlorine, bad taste, odor, color and also provides removal of heavy metals.
2. Y1062- EQUA VENICE 200 RED IN-LINE 12" GAC: Removes organic substances from chlorine, bad taste, odor, color and also provides removal of heavy metals.
3. Y1060- EQUA VENICE 200 RED IN-LINE 12" SPUN : Possible leakage from carbon filters and floating It increases the efficiency and life of the next Membrane filter by taking the substances.
4. YAQM009- Stage (RO Membrane): Bacteria, heavy metals, harmful minerals and other  
It provides purification of dissolved substances.
5. Y1124- Stage (Final Carbon Filter): It makes the water taste better.

#### **Main Parts of the Device :**

check valve : It allows the production water to be stored in the pressure tank.

waste trap : It keeps the waste water of the device at 300 cc/minute.

Clean Water Tank : It is the tank where the purified water is stored. When the tank is empty, the air pressure inside is 7 psi or It should be close to 0.5 bar.

Auto shut off valve : When the clean water tank is full, it cuts off the inlet water and prevents water loss from the drain.

#### **5- ISSUES TO BE CONSIDERED BEFORE INSTALLATION**

First, you must have selected a suitable location for the RO unit. Water intake of the RO device while choosing a location.

for its proximity to the mouth (cold water line), drain and easy replacement of cartridge filters.

A place with sufficient space should be determined.

Your device conductivity max. Pre-treated with 400 Tds and turbidity of max 3 ntu

It is designed for mains water.

We recommend connecting it to the mains water line. Your water does not come from the mains and does not exceed these values.

If it does not fit, the filter cartridge replacement times specified in the maintenance are not guaranteed.  
not possible.

**NOTE :** The transportation and assembly of the device is done or made by the consumer.

Delivery to the place of use and installation are not included in the product price.

It is done by our authorized services, upon request, for a fee.

**NOTE :** In order for you to get the best long-lasting benefit from our device and

In order to get rid of maintenance time tracking, assembly and

We recommend making a maintenance contract. With this contract, our authorized service

come 1-2 times a year and change the filters of your device that need to be changed.

will carry out necessary inspections and maintenance.

## 6- CONTENTS OF THE BOX AND ASSEMBLY PARTS

Check that the following items are out of the device box.

1. Reverse Osmosis device.
2. Pressure tank and tank tap.
3. Membrane of the device (The membrane is attached to the device during assembly.  
must be installed).
4. Water intake Tee (Thief apparatus).
5. Mini ball tap with  $\frac{1}{4}$ " thread inlet and  $\frac{1}{4}$ " hose at outlet.
6. Long neck faucet (swan faucet) and its apparatus.
7. 1 piece of 6 mt hose.
8. User and service manual, warranty certificate.

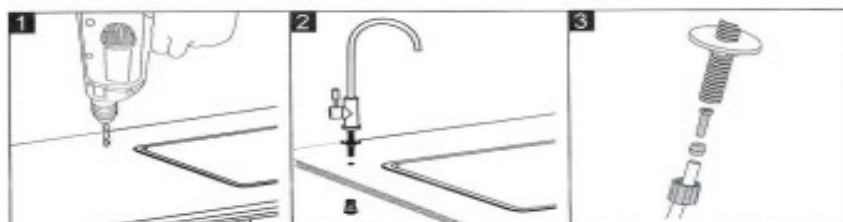
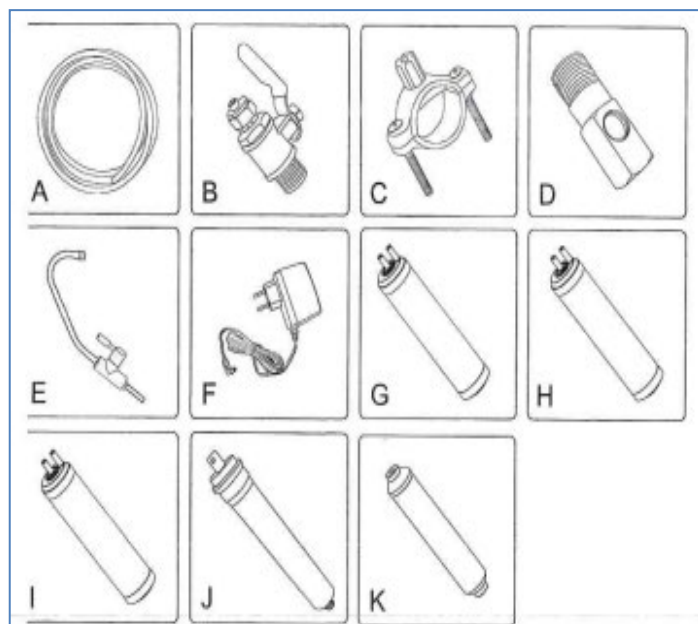
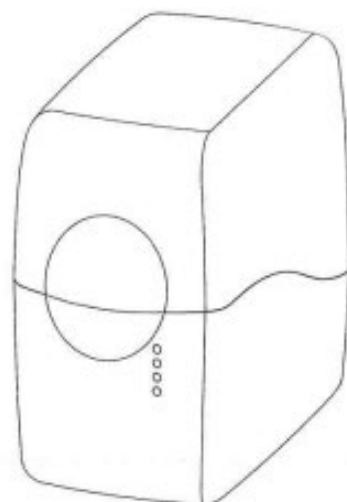
**Hand tools required for assembly (It should be available out of the box.)**

1. Set of drill, steel or diamond drill bits 12 and 13 mm bit and herringbone file (rasp). Assembly  
You should use it according to the place and floor you will do.
2. Teflon tape.
3. Wrench (toad wrench or required open mouth wrench set).
4. A sharp knife or fork knife.

## 7- ASSEMBLY

### 1. Membrane assembly

First, insert the membrane that comes out of the package into its slot. Since the membrane will deteriorate when it dries, it is special.



It was sent in its package and assembled to the device.

Remove the union on the cover side of the slot where the RO membrane will be attached, together with the hose, open the cover and

Replace the membrane and close the slot. Reattach the hose, make sure it is in place, and tighten. It is explained in more detail in the maintenance section.

## 2. Replacing the cartridges

Remove any packaging on the cartridge filters and replace them in the order shown in the assembly drawing.

insert into their sockets. Teflon or non-leaking Teflon if there are records to be attached to the ends.

Install using gasket.

## 3. Installation of Swan Faucet

3.1. Select the place where the swan spout will be placed.

3.2. Drill a hole for this faucet. Use diamond inserts for marble and steel inserts for steel sinks. Clean the burrs.

3.3. Place the swan spout as shown in the figure, without forgetting the mirror and sealing gaskets, and tighten the nut.

Connect the faucet (tap) outlet on the device and the faucet with a hose connection.

## 4. Inlet Valve Installation

Make sure that the cold water line and connection of the water intake port you have determined is  $\frac{1}{2}$ " -  $\frac{3}{8}$ .

make sure you turn it off.

If there is water in the installation, the main valve must be emptied by opening the tap first in order to make the connections.

After the installation is empty, unscrew the tap at the water intake port with the appropriate wrench.

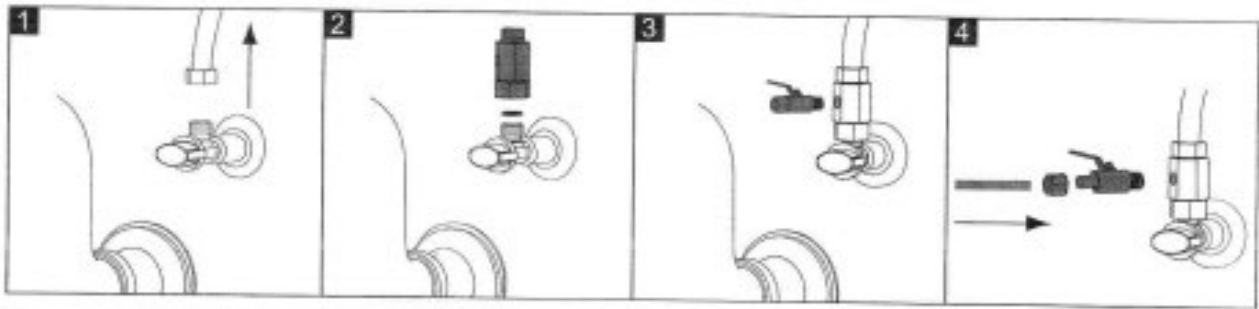
Wrap enough Teflon on the threaded part of the water intake Tee (Thief apparatus) and attach it to the place where you removed it.



Tighten so that it does not leak. Teflon wrapping enough Teflon on the mini ball valve that comes out of the box.

tighten to the side of the piece.

Attach the dismantled faucet to the free opening of the Tee piece and tighten it.



## 5. Drain (Waste) Hose Installation

Use the 1/4" drain hose. Self-adhesive sponge coming out of the waste water clamp

stick the gasket in the hole of the clamp.

Expense

6 to the most suitable place on the pipe.

mm hole

open it.

Sealed side of the clamp

in front of

by bringing water

tighten.



Carefully tighten the drainpipe seal joint. In any case, make sure that the hose will not run back.

be. Drain connection – In such a way that the waste water goes to the drainage line without siphoning or swirling air

should be. Do not connect the waste connection to the dishwasher waste line or the garbage disposal line because

It can cause pressure and cause overflow problem. After these operations, your RO unit is ready to be connected.

## 6. Tank Tap Installation

6.1 There is a preset amount of air in the water tank. Please do not touch the air valve.

6.2 Teflon is not needed to install the tank tap. There is an o-ring gasket on the connection part.

6.3 The tank tap can be easily installed by hand without using pliers, please do not over tighten.

## 7. Assembling the Device

Your RO device is available as under-counter model. designed, but if there is a space problem, the other assembly suitable for all types.

### 7.1 Mini ball valve with Feed Water end of the device

Make the hose connection between

### 7.2 Connect the faucet tip to the Lux faucet.

### 7.3 Connect the drain end to the drain waste end in item 5

Connect as described. In hose connections follow the rules below.

## 8. Connections

### 8.1. Cut the plastic hose as needed.

Make sure that the nozzle of the hose is burr-free and cut squarely.

While cutting the hose, leave some margin in case the device's location changes.

### 8.2. Connect the plastic hose to the connector. Make sure that the hose does not come off. Clamp

Attach the part to the connector as in the figure.

## 8- OPERATING THE EQUA 200+ WATER TREATMENT DEVICE

1. Open the cold water valve and the water supply valve.

2. Open the swan faucet.

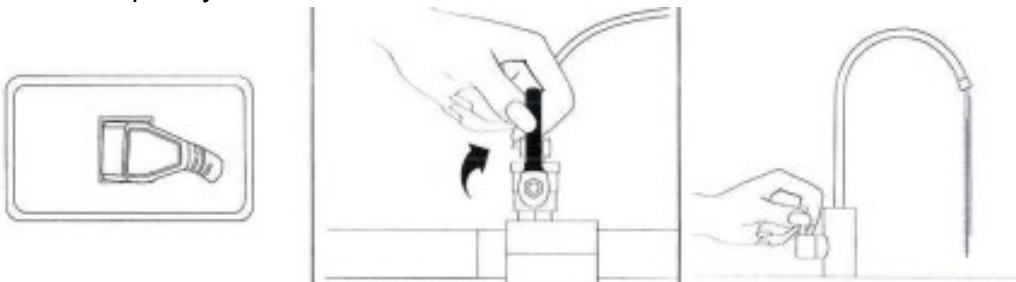
3. Check for leaks anywhere in the device.

4. After a few minutes, water drops will come from the swan spout, then water will start flowing from the faucet.

will start. Wait for this water to flow for approximately 1-2 minutes, then pull the handle.

turn it off. Depending on the installation pressure, your pressure tank will be replaced after approximately 45 minutes to 1.5 hours.

it will be completely filled.



**ATTENTION: DO NOT DRINK THE FIRST WATER FILLED INTO THE TANK .**

5. When the tank is full (water treatment will stop), drain the first water from the swan spout and turn the device off.

you have it ready for use.

6. When the water tank is completely empty, turn the swan faucet back to the closed position and water again.

start production. This process will take approximately 45 minutes to 1.5 hours.

7. You can drink this water with peace of mind.

8. It will be enough to check the device for a few days for leaks.

9. In the **first week, you can observe a milky color in the water, this is purely from air bubbles in the water.**

**originates. It is normal and safe.**

## 9- CARE

In order to get the optimal benefit from our product, there are certain maintenances that need to be done at certain times. your care

frequency depends on feed water quality and frequency of use.

PERIODIC MAINTENANCE: Periodic maintenance is done by the user. Fee on request

You can get help from our authorized services.

Consumables replacement times;

1. EQUA VENICE 200 IN-LINE 12" GAC: Replace every 6-12 months.

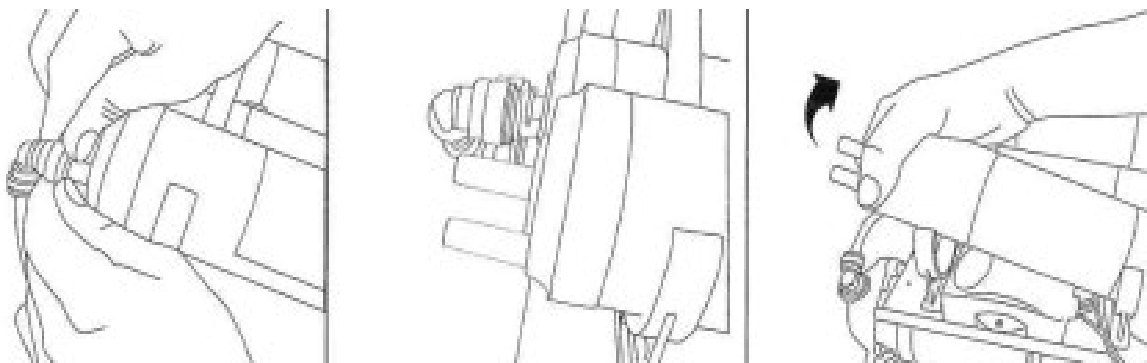
2. EQUA VENICE 200 IN-LINE 12" GAC: Replace every 6-12 months.

3. EQUA VENICE 200 IN-LINE 12" SPUN: Replace every 6-12 months.

The replacement times given are average times, depending on the raw water quality and water consumption.

change times may vary. Filters 1, 2 and 3 are pre-filters. The time of their change

determined by the amount of free chlorine. If there is a chlorine leak at the membrane inlet, it must be replaced.

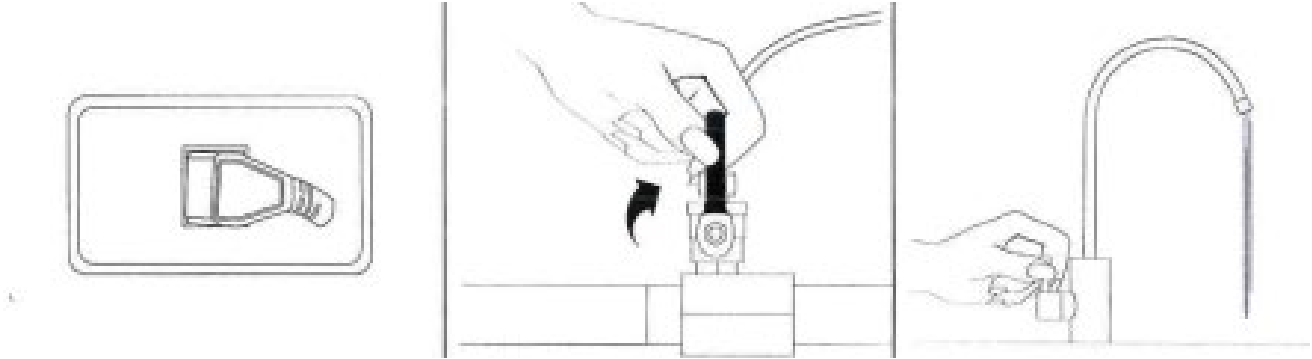


Stage 4 (RO Membrane): Replace every 2-5 years.

5. EQUA VENICE 200 IN-LINE 10" POST: Replace every 1-2 years.

If you are not going to use your device for a long time. Check that you have turned off the supply connection and the tank

Make sure you empty it.



**Note: Provided that maintenance rules are followed and parts are replaced on time ;**

About the Industrial Goods After-Sales Services of the Ministry of Industry

The useful life specified in the annex of the regulation is at least 10 years.

#### 1. Cartridge Filter Change

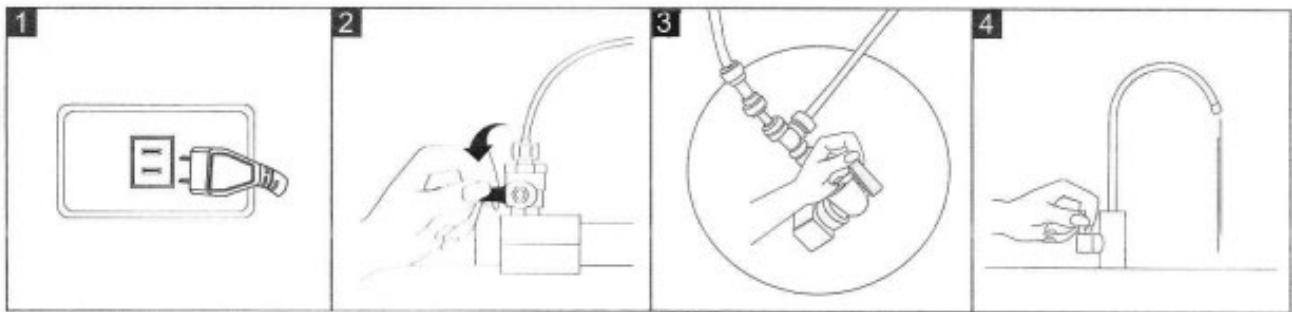
1.1. Turn off the water supply valve.

1.2. Close the tank tap. Open the swan faucet and drain the pressurized water from the device.

1.3. EQUA VENICE 200+ IN-LINE, Replace the old filter with a new one.

1.4. Open the water supply valve and wait until the air in the device is gone. Close the swan faucet when the air is gone and open the tank tap

1.5. After replacement, the device is ready for use again.



R1: Elektrik fişini çıkarınız.

R2: Giriş suyu vanasını kapatınız.

R3: Tank vanasını kapatınız.

R4: Sistemde bulunan suyu boşaltmak için musluğu açınız.

#### 2. Membrane Replacement

\* Close the water supply valve.

\* Close the tank tap. Open the swan faucet and drain the pressurized water inside the appliance.

\* Remove the hose connection union of the end of the membrane housing (sheath).

\* Open the membrane housing cover. Replace the old one with the new one.

\* Open the water supply valve and wait until the air in the device is gone. When the air is gone, close the swan faucet and

open the tank tap.

#### **NOTE:**

The first assembly of the membrane, which comes out of the box of the device (except for figure 5), is as in the figure above.

Filters and membranes are consumables. Changeover times depend on raw water quality and water consumption.

it depends. If these changes are not done properly when the time comes, **EQUA VENICE 200+ SU**

**The** guaranteed water quality in the **ARITMA** device cannot be reached.

According to the relevant communiqués of the Ministry of Industry and Trade, the life of the treatment device is at least 10 (ten) years. Our company

During this period, you must have all kinds of spare parts for your device.

*Attention: the display accessories in the picture*

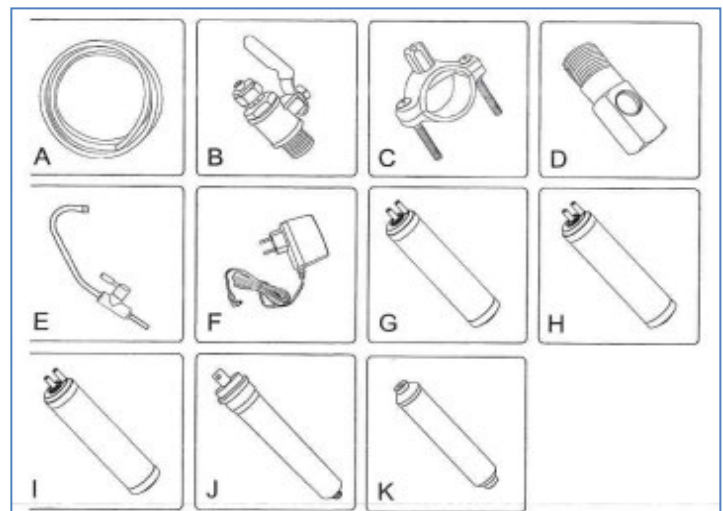
*for promotional purposes. you have purchased*

*It may not be exactly similar to the product.*

#### **Caution**

fully perform the functions of the device.

for its longevity and



The following points should be taken into consideration. Otherwise, our company does not assume the warranty responsibility.

1) Please do not remove the parts on the device.

2) Protect your device from freezing. Do not connect to the hot water line.

3) There is an air valve on the pressure tank, please do not play with this valve.

4) If you are not going to use the device for a long time, turn off the supply valve.

5) If you have not used the device for a long time, when starting it up again, as you did when commissioning it for the first time.

run it (as stated on Page 10).

6) Be careful while carrying, unboxing and assembling the device.

7) In places where the installation pressure is high, installing a pressure reducing valve on the inlet line of the RO device

It is recommended.

8) Do not shorten the waste water drainage line too much. From time to time, check every 15 days whether water is thrown out of the waste.

If there is no water in the waste during production, perform maintenance or call service. Otherwise, on the membrane

irreparable blockages occur.

9) Keep the device clean by wiping it with a soft damp cloth - do not use harsh, abrasive cleaning agents.



## WARRANTY AGREEMENT

**INSTALLATION DATE:**

.....

**CUSTOMER NAME:**

.....

**INSTALLATION ADDRESS:**

.....

.....

**WATER TREATMENT MODEL NAME and SERIES**

**NO:**

.....

**BENCH MATERIAL:**

.....

---

**Company Representative**

**Customer**

**NOTE :** 1) THE CUSTOMER IS OBLIGED TO COMPLY WITH THE PAYMENT TERMS OF THIS AGREEMENT.

2) All EQUA 200+ products are guaranteed for 2 years against fabrication defects.

3) The maximum repair period is 30 working days from the date of delivery to the manufacturer.

4) The warranty period starts from the date of installation.

5) Consumables are out of warranty. Pre-filters every 6-12 months; last post filter every 1-2 years must change.

6) Membrane is in the consumable class.

7) If EQUA 200+ brand consumables are not used, the company will be responsible for the problems that will occur in the device.

is not responsible.

